



# Friends of Newport & Carisbrooke Cemeteries

[www.foncc.org.uk](http://www.foncc.org.uk)



*Volunteers helping to care for the cemeteries and record the lives of those resting there*

[facebook.com/groups/4318199401618337](https://facebook.com/groups/4318199401618337)

## Newsletter No. 20, May 2022

Welcome to newsletter number 20 of the Friends of Newport & Carisbrooke Cemeteries. This is being circulated to all those who have expressed an interest in the Friends and others who we think may be interested. Feel free to circulate this to others who you feel may be interested in the Cemeteries.

Receiving this newsletter does not cost you anything nor commit you to anything, but if you don't wish to receive future copies, feel free to unsubscribe (just email [newsletter@foncc.org.uk](mailto:newsletter@foncc.org.uk)) - we won't take offence.

Past newsletters can be found on the website at:  
[https://www.foncc.org.uk/the\\_group/newsletters.php](https://www.foncc.org.uk/the_group/newsletters.php)



*Looking towards the castle from the driveway to the west of Carisbrooke Cemetery Chapel*

### Where are we? (Tony Barton)

This is Newsletter number 20, so we must have completed 5 years of producing them. Looking back at the first issue, which was just four pages, we seem to have moved on although even then we were looking for additional volunteers to help the group.

We've continued our clearing sessions in the cemeteries, transcribe obituaries etc. and memorial inscriptions with the usual volunteers.

For the third year we had been invited to attend the Isle of Wight Family History Society's 'One Day Conference', unfortunately due to other commitments, we had to withdraw shortly before the event. Hopefully we'll receive another invitation next year.

We made a presentation to the Annual Meeting of the Newport and Carisbrooke Community Council at their invitation; this seemed to go well although there weren't many questions afterwards, which hopefully means the presentation was comprehension and well presented.

Contributions for future newsletters are always welcome, just send an email or message through our Facebook Group. You'll notice that we don't strictly just adhere to cemetery topics, so anything related to Newport or Carisbrooke would be considered.

As we are at the end of May, it is worth reminding all of the 'Butterflies by months' descriptions and images added to the website last year at [foncc.org.uk/the\\_group/nature/nature.php](http://foncc.org.uk/the_group/nature/nature.php) – the details will still be relevant this year.

### **Newport Cemetery (Tony Barton)**

We had the usual 'once a month' sessions at Newport Cemetery, and also a few extra sessions as we tackled one of the large 'bramble patches and also a couple of overgrown graves. Shown here is the double plot grave of Charles and Louisa Collins which we cleared.



Grave of Charles and Louisa Collins before and after



### **Carisbrooke Cemetery (Tony Barton)**

We continued our monthly meetings at Carisbrooke Cemetery clearing vegetation of overgrown graves. In the older (western) part of the cemetery, a number of Yew trees have overwhelmed some of the memorials.



### **St Paul's Cemetery, Halberry Lane. ( Liz and Steve Priddle )**

The contractors have been behind with grass cutting which has allowed the daisies, orchids etc to grow more than in other years, presenting an attractive display. A few people have visited just to take photos of the flowers.





(Tony Barton – St. Paul's Cemetery, next to the hospice in Halberry Lane, has quite a different 'feel' than the Carisbrooke and Newport Cemeteries. If you are in the area, why not take a stroll along the main path – at the far end, it almost feels as if you are in the middle of the country.)

### From the IW County Press newspaper of old:

*(Two names from the past)*

Isle of Wight County Press 27 July 1946

#### NEWPORT

**Modern Kitchen Equipment.** – *Messrs William Dibbens and Son, Ltd.*, have on display at their Church-litten premises the first two units of the new all-steel kitchen equipment which is being manufactured by **Messrs.**

**J. S. White and Co., of Cowes.**

(I wonder if any of these units are still out there ?)

Isle of Wight County Press 6 August 1955

*Start the day right!*

.... in a **DIBBEN** planned bathroom

A glance round the spacious Dibben showrooms will convince you that Dibben can make your dream bathroom a reality.

Here is a typical Dibben bathroom. Note the easy-to-clean wall finish; the de luxe porcelain enamelled bath; the glass-screened shower bath and in your colour.

LET DIBBEN PLAN YOUR KITCHEN TOO!

DEFERRED TERMS AVAILABLE

**WILLIAM DIBBEN**

CHURCH LITTEN  
NEWPORT  
ISLE OF WIGHT  
Telephone 3243 (PBX)

Head Office: SOUTHAMPTON.  
Branches at: Andover, Bournemouth, Eastleigh, Farnham, Salisbury, Totton, Torquay, Winchester, Wokingham.

## **Memorial transcriptions:**

As well as adding inscriptions from photographs, two of the clearing volunteers are making good progress transcribing inscriptions at Newport Cemetery in their own time – they seem to be getting much satisfaction from deciphering inscriptions on memorials well over one hundred years old.

We still seek volunteers to transcribe memorial inscriptions, so it might be worth explaining what is involved; it's very straight forward;

It's a simple task of going around the headstones and writing down the inscriptions. Then either adding them to the website, or typing them up and passing them on for someone else to do that.

To avoid doing the transcriptions randomly, we would provide a plot map for a section as a guide. It's best done with two volunteers working together, as well as a matter of 'safety', one can help the other if the inscription is a bit difficult to read.

So why not give it a go, either as part of our clearing sessions or at times of your own choice, to survey and transcribe inscriptions on memorials – don't think of it as a drudge, think of it as a good excuse to get out in the Summer weather. Just email if you are interested [chair.foncc@gmail.com](mailto:chair.foncc@gmail.com) .

## **The Website:**

More pictures, updated grave plot maps, transcriptions etc. have been added to the website - it's an ongoing task 'forever'. We try to pick up where grave markers which have been renovated or cleaned and update the pictures on the website; we don't update images where grave markers have deteriorated since the existing image.

The small, dedicated, team of volunteers are continuing to transcribe newspaper reports of the lives, deaths and funerals of those buried in the cemeteries. These 'research notes' are attached to individual records and also listed alphabetically - see website [BURIALS/Research Notes](#). Smaller reports have been added to the individual records themselves.

## **Not Buried here – Frank Morey 1858 to 1925: (Tony Barton)**

(We usually write about someone buried in one of the cemeteries, but some local people who are not buried here are well worth a mention, Frank Morey being one.)

Frank Morey was born in Newport, the youngest of five children of Henry William Morey snr., the founder of the Island Timber Merchants, H. W. Morey. Later, after Frank and his brother, Henry William jun., joined the firm, it became H. W. Morey & Sons.

Frank, like many local young men who would later become involved with the town's commercial life, was educated from the age of 12 until he was 16 at Portland House Academy. At an early age Frank showed a keen interest in natural history and later would recall that he had kept white mice in his school locker unknown to Mr. R. Barnes, and his son, his school masters. Also, instead of taking part in school games, Frank would wander off through fields and woods with a butterfly net in search of some rare specimen.

He would later recall, in the introduction of the book which he edited, that as a very small boy he had the excellent plan to write a list of all the animals that existed in the world. To achieve this, he had been given a disused ledger and set about his task; elephant, lion, bear, deer, antelope etc. Things went well until a sister told him that she was sure that there was more than one kind of deer, and such general names were too indefinite to be of much use. Rather disconcerted, Frank put his project on hold.

Over the next twenty years, Frank spent much of his leisure time studying Entomology and related subjects and he modified his childhood plan to just form some lists of species constituting the local fauna. He recognized these were imperfect but they would form a nucleus of his future and more definitive work.

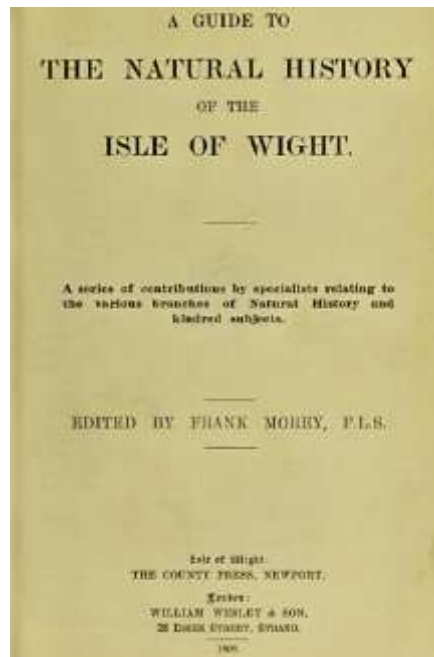
Frank could not spend all his time with his leisure interest and had to join the family firm of timber merchants. On behalf of the firm he spent considerable time travelling in India, Ceylon, Egypt, and Palestine, as well as the principle European countries. While travelling for his work, he had opportunities to extend his studies in natural history and antiquarian research.

Over the years Frank managed to establish a collection of local Natural History objects, including over 2000 species of insects, shells, and plants. He also recorded data as to the habitats and locations of his finds.

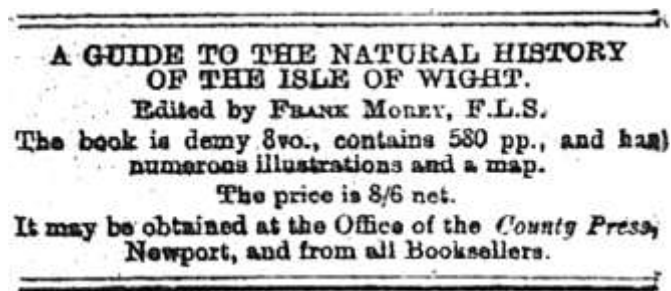
The 1901 census shows Frank living with his widowed father, sister Catherine and a domestic servant at 20 Elm Grove, Newport. Frank's father died in 1906 and Frank moved with Catherine to their new home at 'Wolverton', on Carisbrooke Road.

In 1906 Frank consulted his fellow local naturalist (as well as local solicitor) Frederic Stratton and decided to attempt to achieve his childhood ambition, i.e. a book of Fauna and Flora and Natural History of the Isle of Wight. Realising that the wide range of topics was beyond the scope of any single person, and with some trepidation, he approached a number of experts asking for contributions to be included in the publication without financial reward. He need not have worried as, as he records in the introduction to the final book, *'no set of workers in any branch of learning ... could have responded more willingly, and in some cases even enthusiastically.'* As well as contributions from fellow local naturalists, such as Frederic Stratton, F.L.S., Percy Wadham and Frank Morey himself, contributions were provided by nationally/internationally recognised experts such as Claude Morley, F.E.S., Professor John Milne, D.Sc., F.R.S. and R. W. Poulton of Balliol College, Oxford.

So Frank assembled the contributions, and without previous editorial experience, he edited them into the book 'A guide to the natural history of the Isle of Wight'. The book was printed by the Isle of Wight County Press and published in 1909, costing 8 shillings and 6 pence (42½ p, about £54 in 2022 terms).



*Book cover*



*IW County Press advertisement, 15 May 1909*

Frank's brother, Henry William jun., died in 1909 and Frank became head of the family timber firm.

In 1919 Frank convened a meeting which led to the formation of the Isle of Wight Natural History Society and served until his death as Honorary Secretary and Editor to the Society.

For many years Frank was a Fellow of the Linnean Society, and a member of the Geologist's Association, the Ray, Selborne, and Conchological Societies, and the Hants Field Club. He also contributed to local museums, especially the Battenberg Memorial Museum at Carisbrooke Castle where he was curator for a number of years and had been elected president of the Newport Literary Society two years before his death.

Aside from his interest in the family business and Natural History, Frank was a member of the Newport Education Committee and, for many years, a manager of the I.W. Saving Bank.

Frank died in the Royal IW County Hospital, Ryde, on 29 December 1925 aged 67 following an operation. At the time of his death he was head of the firm, H. W Morey and Sons, Ltd.

Frank Morey's will clearly stated what he wanted done after his death; *"I wish my body to be cremated, and the ashes to be pulverized and to be scattered in some beautiful spot in*

*the Isle of Wight.*” So his family and friends attended his cremation at Woking crematorium, and later his executors, Catherine, his sister, and Frank Snow, company secretary of the timber firm, fulfilled his request by scattering his ashes in Borthwood Copse; the freehold of which, by his will, he had devised to the National Trust.



*Borthwood Copse, near Winford, I.W.*

Frank’s sister, Catherine, had shared his interest in local Natural History during his life, and following his death she carried on his involvement with both the I.W. Natural History Society and the curatorship of Carisbrooke Castle Museum. Her interests were not, however, confined to Frank’s, she also involved herself with the District Nursing Association, the Literary Society, the War Hospital Supply Depot, and many other charities.

Catherine Morey died 10 January 1943 aged 87, her body was cremated at South Stoneham and, following a memorial service at St Mary’s Church, Carisbrooke, her ashes were scattered in Borthwood Copse where Frank’s ashes had previously been scattered.

#### *Sources:*

- *Frank Morey’s obituary & bequests : IW County Press, 2 January 1926 & 20 February 1926*
- *Catherine Morey’s obituary, memorial service etc.: IW County Press, 13 January 1943*
- *‘A guide to the natural history of the Isle of Wight’, edited by Frank Morey, 1909*  
(available in pdf format <https://wellcomecollection.org/works/smqdfn9d> )

#### **Future events:**

Clearing sessions in the cemeteries will continue as possible with the regular volunteers and new volunteers would be welcome to join us – check out the website or our Facebook group for details.

*Copyright © 2022 Friends of Newport & Carisbrooke Cemeteries, All rights reserved.*

FoNCC, c/o 138 Worsley Road, Newport, Isle of Wight PO30 5JB United Kingdom

